



Assembly & Instruction Manual

HEAVY DUTY AIR RIVETER

Model 1106



Distributed Exclusively By



CUMMINS
INDUSTRIAL TOOLS



THANK YOU FOR BUYING CUMMINS INDUSTRIAL TOOLS

Your new Air Riveter has been engineered and manufactured to Cummins tools high standards for dependability, ease of operation, and operator safety. Properly cared for, it will give you years of rugged, trouble-free performance.

CAUTION: Carefully read through this entire operator's manual before using your new machine.

Pay close attention to the Rules for Safe Operation, Warnings, and Cautions. If you use your machine properly and only for what it is intended, you will enjoy years of safe, reliable service.

SAVE THIS MANUAL FOR FUTURE REFERENCE

Customer Service Postal Address:
1290 35 Road
Minden, NE 68959
voice: 1-(308) 832-2070
fax: 1-(308) 832-2069

You can purchase additional
tools at www.cumminstools.com

WARNING
To reduce risk of injury to everyone using, installing,
repairing, maintaining, or changing accessories on or
making use of this tool, you must read and understand
these instructions before performing any such task.

Safety Warnings and Precautions

WARNING: When using tool, basic safety precautions should always be followed to reduce the risk of personal injury and damage to equipment.

Read all instructions before using this tool!

1. **Keep work area clean.** Cluttered areas invite injuries.
2. **Observe work area conditions.** Do not use machines or power tools in damp or wet locations. Don't expose to rain. Keep work area well lit.
3. **Keep children away.** Children must never be allowed in the work area. Do not let them handle machines, tools, or extension cords.
4. **Store idle equipment.** When not in use, tools must be stored in a dry location to inhibit rust. Always lock up tools and keep out of reach of children.
5. **Use the right tool for the job.** Do not attempt to force a small tool or attachment to do the work of a larger industrial tool. There are certain applications for which this tool was designed. It will do the job better and more safely at the rate for which it was intended. Do not modify this tool and do not use this tool for a purpose for which it was not intended.
6. **Dress properly.** Do not wear loose clothing or jewelry as they can be caught in moving parts. Protective, electrically non-conductive clothes and non-skid footwear are recommended when working. Wear restrictive hair covering to contain long hair.
7. **Use eye protection.** Always wear ANSI approved impact safety glasses underneath a full face shield during use. Also, wear heavy duty work gloves.
8. **Do not overreach.** Keep proper footing and balance at all times. Do not reach over or across running machines.
9. **Maintain tools with care.** Keep tools sharp and clean for better and safer performance. Follow instructions for lubricating and changing accessories. The handles must be kept clean, dry, and free from oil and grease at all times.
10. **Remove adjusting keys and wrenches.** Check that keys and adjusting wrenches are removed from the tool or machine work surface before starting work.
11. **Stay alert.** Watch what you are doing, use common sense. Do not operate any tool when you are tired.
12. **Check for damaged parts.** Before using any tool, any part that appears damaged should be carefully checked to determine that it will operate properly and perform its intended function. Any part that is damaged should be replaced.
13. **Replacement parts and accessories.** When servicing, use only identical replacement parts. Use of any other parts will void the warranty. Only use accessories intended for use with this tool. Approved accessories are available from Cummins Industrial Tools.
14. **Do not operate tool if under the influence of alcohol or drugs.** Read warning labels on prescriptions to determine if your judgment or reflexes are impaired while taking drugs. If there is any doubt, do not operate the tool.

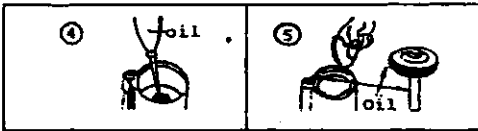
Warning: The warnings, cautions, and instructions discussed in this instruction manual cannot cover all possible conditions and situations that may occur. It must be understood by the operator that common sense and caution are factors which cannot be built into this product, but must be supplied by the operator.

Maintenance & Adding oil for Hydraulic Riveter:

1. Disconnect air hose.
2. Use the spanner to take apart the head as fig. 1 .
3. Use the spanner to open the bottom cover as fig. 2 .
4. Remove the piston of the cylinder as fig. 3 .



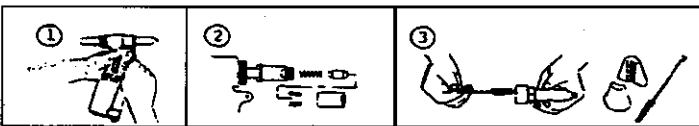
5. Clean the inside of the cylinder and the frame body.
6. Full the lubricate oil as fig. 4 .
7. Clean the stem of piston, apply grease to the inner wall of cylinder and the O-ring as fig.



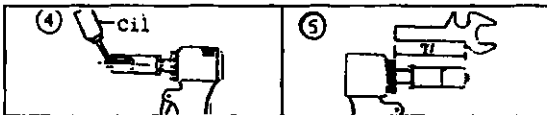
8. Reassemble the riveter by following the disassembly procedure in reverse.

Clean & Maintenance for the Head of Riveter

1. Disconnect air hose.
2. Use spanner to take apart the head as fig. 1 .
3. Use spanner to take apart the part as fig. 2 .
4. Clean all the part and inside of the head as fig. 3 .



5. Apply lubricate oil as fig. 4 .
6. Check the length as fig. 5 .



7. Reassemble the Head of Riveter by following the disassembly procedure in reverse.

3/16" AIR RIVETER

SPECIFICATIONS

Capacity: 3/32",

1/8", 5/32", 3/16"

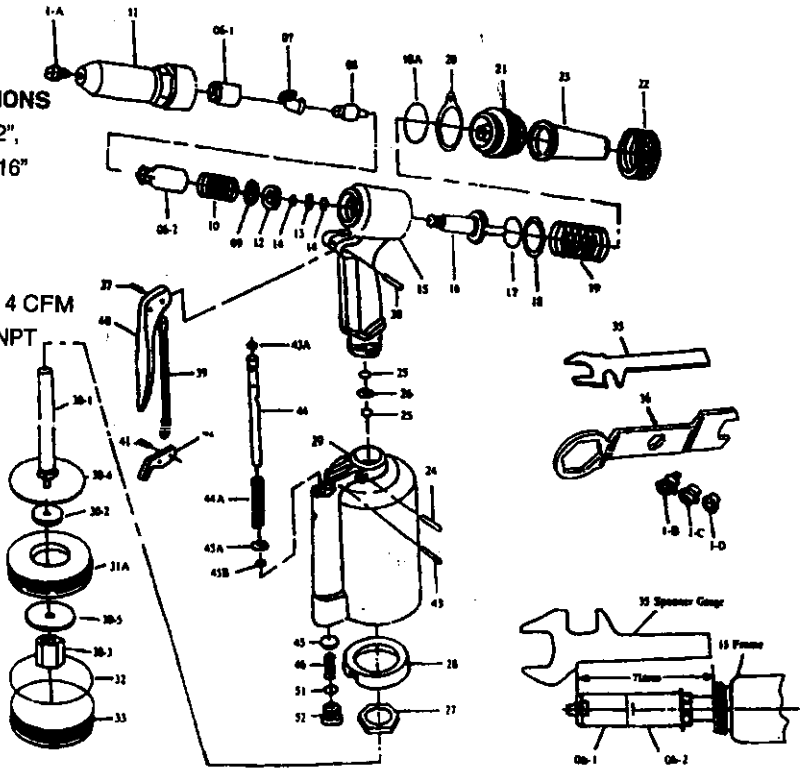
Air Pressure:

60 ~ 90psi.

Average Air

Consumption: 4 CFM

Air Inlet: 1/4" NPT



PART NO.	DESCRIPTION	PART NO	DESCRIPTION
1A	Nosepiece (3/16")	27	Frame Lock Nut
1B	Nosepiece (5/32")	28	Rubber Cushion
1C	Nosepiece (1/8")	29	Air Cylinder
1D	Nosepiece (3/32")	30-1	Air Piston Stem
06-1	Jaw Case Front Tart (3/32", 1/8", 5/32")	30-2	Air Piston Al
		30-3	Air Piston Lock Nut
06-2	Jaw Case End Tart	30-4	Big Iron Plate
07	Jaw	30-5	Small Iron Plate
08	Jaw Pusher	31A	Air Piston Ring
09	Case Washer Ring	32	Cylinder O Ring 67.94x2.62
10	Jaw Pusher Sping	33	Cylinder Cap
10A	Frame Cap O Ring 27x2	35	Spanner Gague
11	Frame Head	36	Spanner
12	Case Lock Nut	37	Trigger Pin
13	Back Up Ring	38	Connector
14	Back Up O Ring p12	39	Trigger Rod
15	Frame	40	Trigger
16	Oil Piston	41	Connector
17	Oil Piston O Ring p22A	42	Trigger Lever
18	Back Up Ring	43	Lever Pin
19	Return Spring	43A	Valve Pusher O Ring p7
20	Hanging Clip	44	Valve Pusher
21	Frame Cap	44A	Valve Spring
24	Setting Screw Pin	45	Valve
25	Back Up O Ring 12	45A	Valve Collar
26	Bakc Up Ring	45B	Collar O Ring p5
22	Frame Cap Nut	46	Valve Spring
23	Safety Cap	51	Valve Cap O Ring p11
		52	Valve Cap